

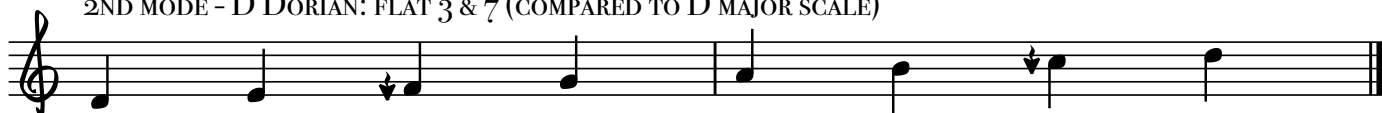
# THE MODES OF THE MAJOR SCALE

C SCALE STARTING ON EACH DEGREE

1ST MODE - IONIAN (OR MAJOR SCALE)



2ND MODE - D DORIAN: FLAT 3 & 7 (COMPARED TO D MAJOR SCALE)



3RD MODE - E PHRYGIAN: FLAT 2, 3, 6, & 7



4TH MODE - F LYDIAN: SHARP 4



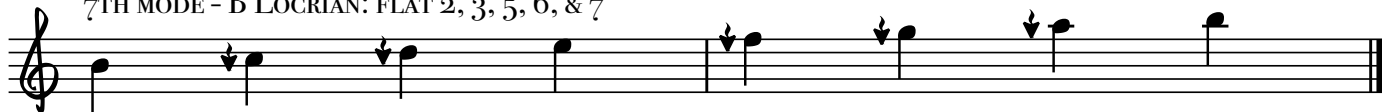
5TH MODE - G MIXOLYDIAN: FLAT 7



6TH MODE - A AEOLIAN (OR NATURAL MINOR): FLAT 3, 6, & 7



7TH MODE - B LOCRIAN: FLAT 2, 3, 5, 6, & 7



## THE 7 MODES STARTING ON C

C IONIAN (OR MAJOR SCALE)

C DORIAN - 2ND MODE OF B<sup>b</sup> MAJORC PHYRGIAN - 3RD MODE OF A<sup>b</sup> MAJOR

C LYDIAN - 4TH MODE OF G MAJOR



C MIXOLYDIAN - 5TH MODE OF F MAJOR

C AEOLIAN - 6TH MODE OF E<sup>b</sup> MAJORC LOCRIAN - 7TH MODE OF D<sup>b</sup> MAJOR